



MANUAL BICARBLAST MIXING DEVICE

The mixing device is an apparatus, which makes it possible for you to mix the BioClean liquid in a certain known ratio.



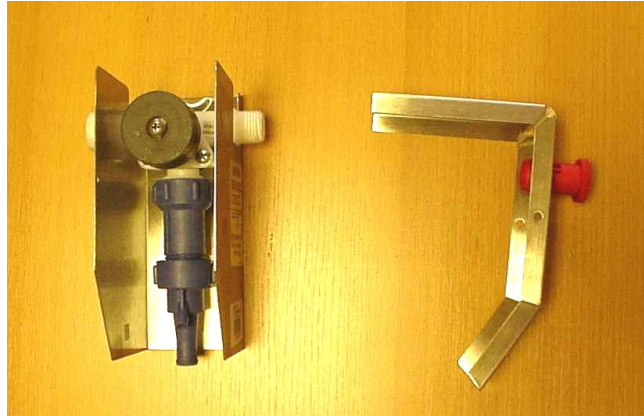
The mixing device is connected to a water tap. By means of a venturi-effect caused by the running water the BioClean is mixed with the water, so the outlet gives you the required mixture of water and BioClean liquid.



First open the mixing device by releasing the two screws. The mixing device looks than like this.



The mixing device



The mixing device after opening

1. Connecting the chemical supply hose

Step 1

Choose the insert tip according the required ratio. See the below table.

Color of insert tip	Ratio	Color of insert tip	Ratio
None	2.7:1	Blue	16.4:1
White	3.5:1	Red	24.0:1
Yellow	3.7:1	Peach	29.8:1
Pink	4.1:1	Light blue	38.6:1
Green	5.3:1	Purple	47.8:1
Black	6.7:1	Light green	73.1:1
Brown	9.4:1	Orange	132.1:1
Gray	13.9:1	Light brown	260.2:1

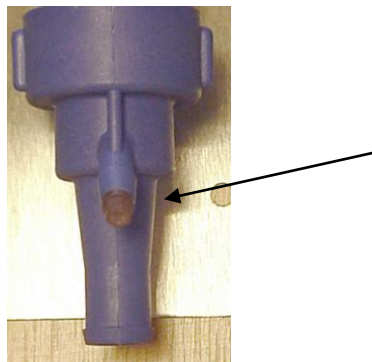
The above table is based upon the chemical viscosity of water (cps = 1.0) and should only be used as a guide. Actual ratios may vary due to product viscosity, flow pressure and tubing distance(s).

The insert looks like the following picture:



Step 2:

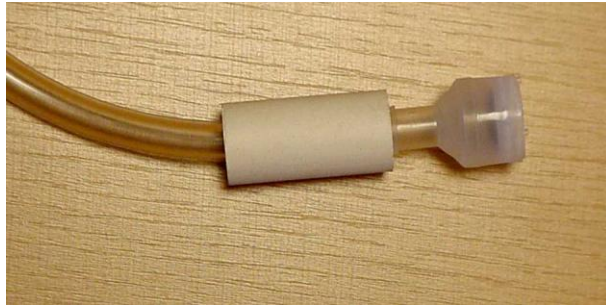
Screw the insert into the venturi.





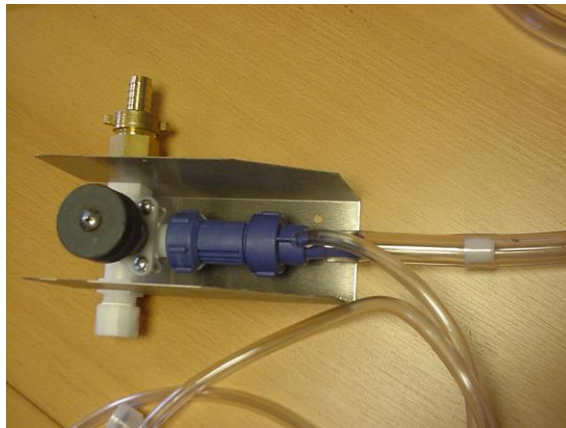
Step 3:

Place the ceramic weight over the smallest hose (O.D. 9.5 mm) and insert the foot-valve.



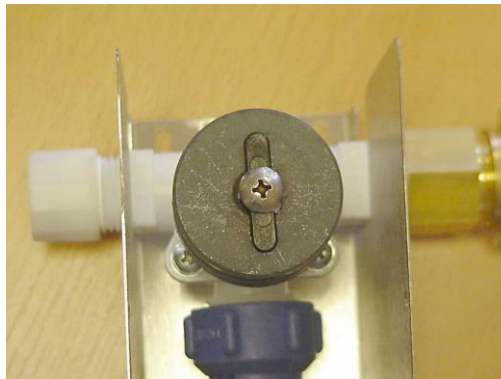
Step 4:

Connect the biggest hose (O.D. 25 mm) to the venturi with the plastic insert nearest to the venturi body.



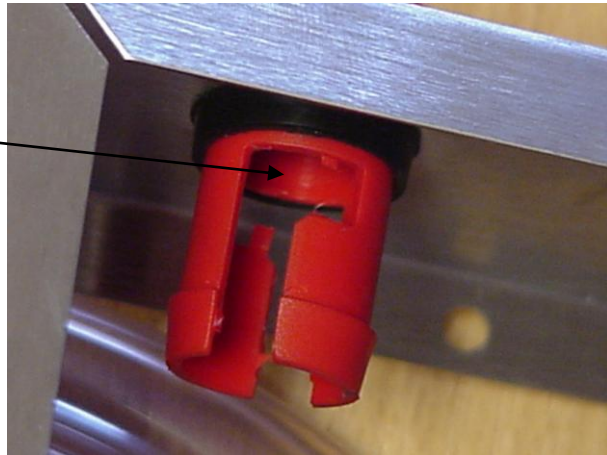
Step 5:

Mount the button lock tab between the magnet and its screw.



Step 6:

Remove the tabs in the red button



The mixing device is operated by turning the knob slightly clockwise while pressed in. The mixing device is then locked. Turn the knob counter clockwise to release it.



Mixing device switched off



Mixing device switched on

BicarBlast B.V.
Sigarenmaker 2
5521 DJ Eersel
The Netherlands

Phone: +31 (0)497 33 00 32
Fax: +31 (0)497 33 03 44
E-mail: info@bicarblast.com